



# Archives

AUGUST  
2025

WILKINSBURG HISTORICAL SOCIETY NEWSLETTER  
VOLUME 31, ISSUE 6

2025 will see the completion of renovations for Wilkinsburg's fifty-six year old Kelly Primary School at 400 Kelly Avenue. The changes include an addition which will serve as the new entrance, removal of all asbestos containing materials, accessibility improvements, new classrooms, kitchen equipment, and improved exterior lighting in the parking areas,



This July, 2025 view of the Kelly Primary School entrance shows that extensive construction work is being undertaken. The renovations are on schedule at this time and are expected to be completed in September.



This August 1966 image shows the groundbreaking for the “new” Kelly Public School. While one person displays the blue-prints for the school, other School Board members and School District personnel look on as the principal moves the first shovel of dirt.

Now, fifty-nine years later, Kelly Primary will have an upgraded campus and entrance. This is a great way to welcome the new School superintendent, Dr. Jocelyn V. Artinger.

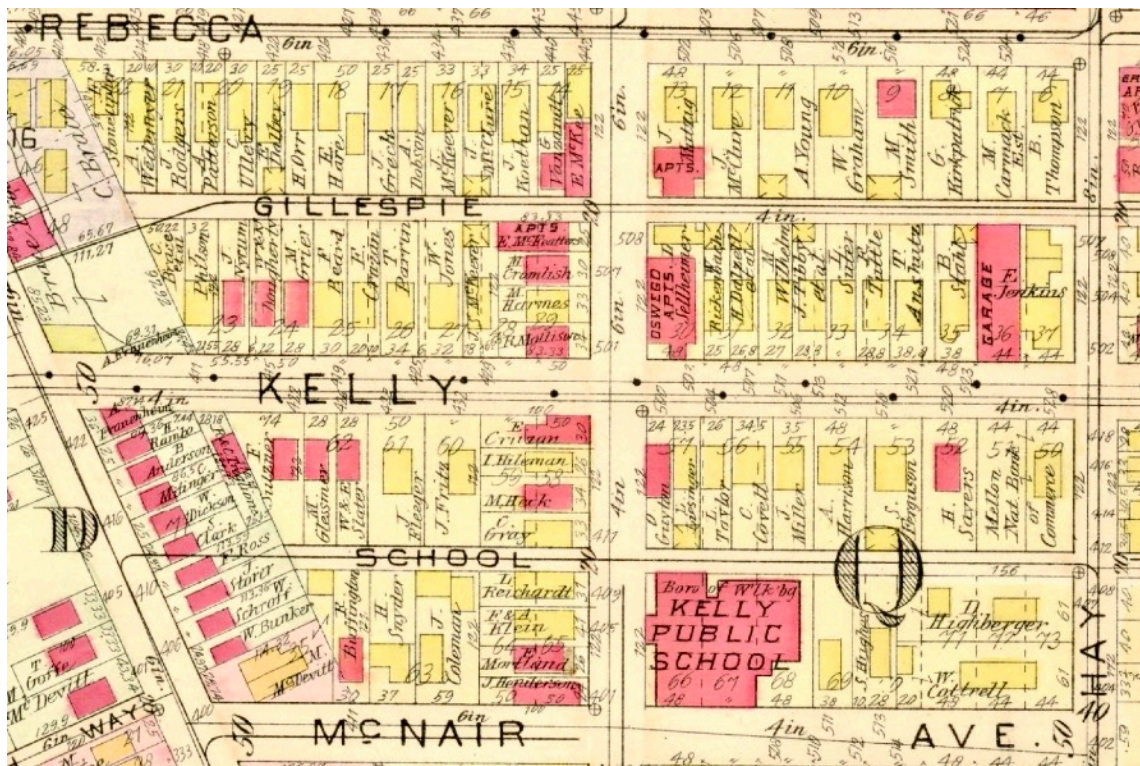


Wilkinsburg's first Kelly Public School, built in 1890 at the corner of Pitt Street and McNair Avenue, was used until 1969. Initially it was built as a two-story structure, but by 1893 a third story was added to provide rooms for high school education. In 1910 a dedicated High School was built on Wallace Avenue. Kelly School resumed service as an elementary school.



Left image shows the old Kelly Public School in 1966 after seven homes on Kelly Avenue were demolished to provide clear space for a new Kelly School to be built. The old school was used for the next three years until 1969 when construction for the new Kelly School was completed and the school opened.

Right image shows the final day of the old school as it succumbed to the wrecking ball.



This section of a 1915 Hopkins Map (from [historicpgh.org](http://historicpgh.org)) shows the original location of the Kelly Public School which served Wilkinsburg students for nearly eighty years. When the "new" Kelly School was built in 1966-69, the school entrance faced Kelly Avenue at Pitt Street. On the historic Hopkins maps the brick buildings are shown in red, while wood frame buildings are shown in yellow. Seven of the Kelly Avenue frame homes were razed in 1966 at that time to provide land for the erection of the sprawling new Kelly School.



**July 23, 1962, a memorable date for the Hall of Fame induction of Wilkinsburg's favorite baseball player, Bill McKechnie.** McKechnie played for the Pittsburgh Pirates in 1907 and managed the team in 1922. Under his management the Pirates won the World Series in 1925. Also inducted in 1962 was Edd Roush, Bob Feller and Jackie Robinson. Robinson was a great second baseman and played for the Brooklyn Dodgers from 1947 to 1956. He broke the color barrier by being the first African-American to play in the Major League.



The 1962 Baseball Hall of Fame induction class included Wilkinsburg's Bill McKechnie. A group of McKechnie's friends from Wilkinsburg travelled to Cooperstown NY to attend the ceremony. The number of fans in the audience exceeded 10,000 people.



Wilkinsburg's Jim Richard helped to organize the entourage who accompanied baseball great Bill McKechnie to his 1962 induction. Richard is standing with McKechnie who is wearing a bow tie. All of the McKechnie fans wore flat-topped boater hats with the word's McKechnie - Wilkinsburg, PA on a band around the crown.



NATIONAL BASEBALL HALL OF  
FAME AND MUSEUM

COOPERSTOWN, N. Y.

JULY 23, 1962

PROGRAM

10:30 A. M.

Master of Ceremonies, RAY KELLY of the Philadelphia Bulletin and President of the Baseball Writers' Association of America.

Welcome by HON. HOWARD C. TALBOT, JR., Mayor of Cooperstown.

Introductions:

WARREN C. GILES, President, National League.

WILLIAM HARRIDGE, Chairman of the Board of Directors, American League

PAUL S. KERR, President, National Baseball Hall of Fame and Museum.

Other Notables:

FORD C. FRICK, Commissioner of Baseball.

Presentation of Baseball Hall of Fame Cup for 1961 to Los Angeles Dodgers.

Presentation of Members of Hall of Fame.

JOSEPH E. CRONIN, President, American League and others.

Dedication of plaques of

Robert William Andrew Feller

William Boyd McKechnie

Jack Roosevelt Robinson

Edd J. Roush

12:15 P. M.

Luncheon at The Treadway-Otesaga Hotel for Honored Guests.

1:45 P. M.

Presentation by George Rulon, Director of American Legion Baseball, of Certificate to James Joseph Gruber as the Outstanding American Legion Baseball Player of 1961.

Introduction of Members of Baseball Hall of Fame.

2:00 P. M.

Annual Major League Hall of Fame Game between New York Yankees (American League) and Milwaukee Braves (National League).



This program is from the July 23, 1962 National Baseball Hall of Fame ceremony of the 1962 inductees. Autographed by all four of the 1962 members, Bill McKechnie, Edd Roush, Bob Feller and Jackie Robinson, this special program was given to the Wilkinsburg Historical Society by James B. Richard, who organized the Wilkinsburg entourage to Cooperstown.



GoFundMe opportunity to bring jazz education and performance to Wilkinsburg!

# The Jazz Workshop Inc. Building Renovation



 The Jazz Workshop Inc. is organizing this fundraiser.

 Donation protected

## The Jazz Workshop Inc. Building Renovation Proposition

(Your Donation is Tax Deductible)

**UPDATE: February 6, 2025**

**Help Build a Thriving Future and Honor the Legacy of Music and Arts!**

For over 50 years, The Jazz Workshop, Inc. (JWI) has been a pillar of affordable music education, performance opportunities, and cultural enrichment for underserved youth and adults. Our mission goes beyond music—it equips participants with industry knowledge, essential life skills, and the ability to navigate a career in the arts. Now, we need your help to take this vision even further!

**1015 Center Street, built in 1878 in Wilkinsburg** is one of the most historic structures in the Borough. It has served as a family home, office building and for nearly fifty years was where legendary Harold Young taught jazz to young aspiring musicians. Now the building is in need of renovations to continue the dream of Harold Young and his talented daughter, saxophonist Dr. Jacqueline Young. Please contribute what you can.

To the Building Renovation : [https://www.gofundme.com/f/The-jazz-workshop-inc-building-restoration?lang=en\\_US](https://www.gofundme.com/f/The-jazz-workshop-inc-building-restoration?lang=en_US) <https://gofund.me/4b2673a1>

For more about the Jazz Workshop and the mission, impact, community outreach and opportunity to be involved: The Jazz Workshop Inc.: <https://www.jazzworkshopinc.org/>



Don't miss out on **The Wilkinsburg Sun**, a free monthly community newsletter published by the volunteer Wilkinsburg Community Newsletter Board, with the support of the Wilkinsburg Borough, the Wilkinsburg School District, the Wilkinsburg Chamber of Commerce and the Wilkinsburg Community Development Corporation. The Sun accepts submitted articles provided they are related to Wilkinsburg and are civic-minded.  
<https://wilkinsburgsun.wordpress.com>

Sign up to receive The Sun by email at:  
<http://eepurl.com/v0iBP> and friend The Sun on Facebook.

Wilkinsburg Historical Society has a website, to share more information about the history of Wilkinsburg. [wilkinsburghistory.wordpress.com](http://wilkinsburghistory.wordpress.com)

Mailing address: **Wilkinsburg Historical Society, P.O. Box 17252, Pittsburgh, PA 15235**

The "Archives" Historical Society newsletter is published monthly, March through November.

We do not usually publish the Archives during the three Winter months of December, January and February.

Wilkinsburg Historical Society yearly dues for the Wilkinsburg Historical Society are:  
**\$20.00 INDIVIDUAL Member, \$35.00 FAMILY Membership**  
**\$10.00 STUDENT or ASSOCIATE Members** Please keep your membership dues up to date.  
**Contributions are needed for "Lights for Lincoln", to get improved lighting for the Lincoln Plaza area. Abraham Lincoln stands in the dark after sun-down. Your donation can help us illuminate this outstanding area overlooking the Lincoln Highway.**

**Wilkinsburg Historical Society - Membership application**  
**Help promote the valuable history of Wilkinsburg.**

Name \_\_\_\_\_

Address \_\_\_\_\_

City, State, Zip \_\_\_\_\_

Home Phone \_\_\_\_\_ Cell Phone \_\_\_\_\_

E-mail address \_\_\_\_\_

( ) \$20 Individual membership

( ) \$35 Family membership

( ) \$10 Student or associate membership

( ) \$\_\_\_\_\_ Additional donation

Please make check payable to: **Wilkinsburg Historical Society**  
**PO Box 17252, Pittsburgh, PA 15235**

Anytime is a good time to pay your dues for the Wilkinsburg Historical Society. We have many preservation projects going on, and providing displays for Wilkinsburg events. Many thanks to those of you who have already sent in your membership dues. Please use the address on the form, our PO box.