

# WILKINSBURG LIBRARY

## MONTHLY REPORT

APRIL

2023

### By the Numbers... for March



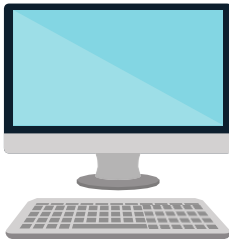
1,186

PATRONS VISITED THE LIBRARY (ABOUT  
44 PER DAY)



2,559

ITEMS CHECKED OUT TO PATRONS IN  
MARCH (ABOUT 95 PER DAY)



936

PUBLIC COMPUTER USES IN MARCH



# WILKINSBURG LIBRARY MONTHLY REPORT

APRIL

2023

## Crochet Corner WITH FRANKIE

### Wilkinsburg Library

Every Tuesday  
10am - 12pm  
3rd floor  
605 Ross Ave

### Eastridge Branch

2nd and 4th Saturday  
11am - 1pm  
1900 Graham Blvd



Beginners and experts are all welcome!

## CONNECTING SENIORS: VIRTUAL MEETUP



**WHEN** 10AM  
FIRST THURSDAY  
OF EVERY MONTH

**WHERE** ZOOM  
FOLLOW THE LINK FROM OUR WEBSITE  
[WILKINSBURGLIBRARY.ORG/CALENDAR/](http://WILKINSBURGLIBRARY.ORG/CALENDAR/)  
JOIN VIA VIDEO OR PHONE!

USING ZOOM IS EASY & REQUIRES NO  
SPECIAL SOFTWARE OR SIGN UPS  
CONTACT US IF WE CAN HELP!  
412-244-2940  
[WILKINSBURGHELP@GMAIL.COM](mailto:WILKINSBURGHELP@GMAIL.COM)



Wilkinsburg Library presents...



# CHILDREN'S LIBRARY

APRIL

2023

<p><b>SATURDAY STORYTIME - HOPPIITY HOP</b></p> <p><b>SATURDAY APRIL 1 @ 10:15AM</b></p> <p>Enjoy stories, songs, shakers, and a craft all about bunnies.</p> <p>For children with a guardian.</p>	<p><b>EASTER CARNIVAL</b></p> <p><b>SATURDAY APRIL 1 @ 11:00AM - 4:00PM</b></p> <p>Right after our 'Hopping' Saturday Storytime, join us for an amazing time with an egg hunt, festival games, crafts, prizes, and snacks!</p>	<p><b>GRAPHIC NOVEL BOOK CLUB @ EASTRIDGE BRANCH</b></p> <p><b>FRIDAY APRIL 21 @ 4:00 - 5:00PM</b></p> <p>A monthly book club all about GRAPHIC NOVELS! Talk with other book lovers on the 3rd Friday of the Month about your favorite books. Suggested for grades 2 and up.</p>
<p><b>AFTERSCHOOL SNACKS MONDAYS - FRIDAYS @ 3:30PM - 6:00PM</b></p> <p>Free healthy snacks for youth ages 0 - 18.</p>		
<p><b>AFTERSCHOOL FUN TUESDAYS &amp; THURSDAYS @ 3:30PM - 5:00PM</b></p> <p>May include games, crafts, food, and more! Try something new! For all ages.</p> <p><b>APR 4 &amp; 6 - Parler Beads</b> <b>APR 11 &amp; 13 - Egg Pom-Pom Poppers</b> <b>APR. 18 &amp; 20 - Earth Day Oobleck</b> <b>APR. 25 &amp; 27 - DIY Sock Bunny</b></p>		
<p><b>MAKE &amp; TAKE WEDNESDAYS @ EASTRIDGE BRANCH</b></p> <p><b>WEDNESDAYS @ 10:00AM - 6:00PM</b></p> <p>Pick up a weekly project kit anytime. We give you the supplies &amp; instructions.</p> <p><b>APR. 5 - Egg Painting</b> <b>APR. 12 - Egg Pom-Pom Poppers</b> <b>APR. 19 - Earth Day Oobleck</b> <b>APR. 26 - DIY Sock Bunny</b></p>		
<p><b>LEGO CLUB MAIN BRANCH &amp; EASTRIDGE BRANCH</b></p> <p><b>WEDNESDAYS @ 4:00PM - 6:00PM</b></p> <p>Calling all LEGO® fans! The library provides the LEGO®, and you build, create, and have fun.</p>		
<p><b>FILM FRIDAYS FRIDAYS @ 4:00PM - 6:00PM</b></p> <p>Enjoy a family-friendly movie while enjoying a fresh bag of popcorn.</p> <p><b>APR. 14 - "Turning Red"</b> <b>APR. 28 - "Peter Pan And Wendy"</b></p>		

**WILKINSBURG PUBLIC LIBRARY & EASTRIDGE BRANCH CHILDREN'S APRIL 2023 CALENDAR**

**Wilkinsburg Public Library**  
605 Ross Avenue  
Wilkinsburg, PA 15221  
412-244-2940  
wilkinsburghelp@gmail.com

- Sunday - Closed
- Monday - 9:00am - 6:00pm
- Tuesday - 9:00am - 6:00pm
- Wednesday - 9:00am - 6:00pm
- Thursday - 9:00am - 6:00pm
- Friday - 9:00am - 6:00pm
- Saturday - 10:00am - 5:00pm

**Eastridge Branch**  
1900 Graham Boulevard, Rear  
Pittsburgh, PA 15235  
412-242-0050  
wilkinsburghelp@gmail.com

- Sunday - Closed
- Monday - Closed
- Tuesday - Closed
- Wednesday - 10:00am - 6:00pm
- Thursday - 10:00am - 6:00pm
- Friday - 10:00am - 6:00pm
- Saturday - 10:00am - 5:00pm

**LIBRARY WILL BE CLOSED: FRIDAY APRIL 7**

CHILDREN'S LIBRARIAN: Charlene Castonovo

PHONE: 412-244-2944

EMAIL: castonovoc@wilkinsburglibrary.org

FACEBOOK: @WilkinsburgLibrary

INSTAGRAM: Wilkinsburg Public Library



503

**THE NUMBER OF PATRONS WHO VISITED THE CHILDREN'S LIBRARY (ABOUT 19 PER DAY)**

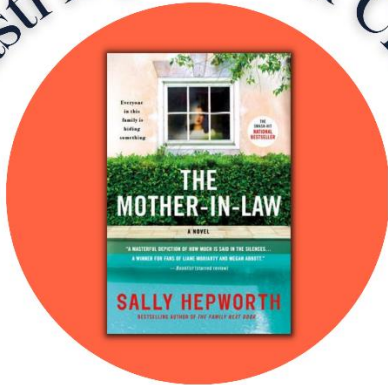
# Eastridge Library

APRIL

2023



## Eastridge Book Club




**The Mother-in-Law**  
Sally Hepworth

**WEDNESDAY**  
**APRIL 19TH | 6:30PM-8PM**

EASTRIDGE LIBRARY BRANCH  
1900 GRAHAM BLVD

## Tea & Inspiration

Every third Saturday of the month  
11:00 am - 12:30 pm




This group will explore quotes and scriptures from around the world, focusing on the betterment of the world and our community. Come to read, reflect, and have elevated conversations. Tea and treats provided!

Dates & Themes

Feb. 18 - The Heart (more than a physical organ!)	Apr. 15 - A Kindly Tongue
Mar. 18 - Eternal Truths	May 20 - Elimination of Prejudice

Eastridge Library Branch  
1900 Graham Blvd  
Pittsburgh, PA 15235



## Crochet Corner

WITH FRANKIE

### Wilkinsburg Library

Every Tuesday  
10am - 12pm  
3rd floor  
605 Ross Ave

### Eastridge Branch

2nd and 4th Saturday  
11am - 1pm  
1900 Graham Blvd



Beginners and experts are all welcome!

# MOVIE NIGHT

FRIDAY, APRIL 28  
SHOWTIME AT 8PM

EASTRIDGE AUDITORIUM  
1900 GRAHAM BLVD  
PITTSBURGH, PA 15235

PRESENTED BY  
WILKINSBURG PUBLIC LIBRARY  
AND WILKINSBURG BOROUGH  
COUNCIL SPECIAL EVENTS



Eastridge branch

461

PATRONS VISITED THE BRANCH (ABOUT 24 PER DAY)